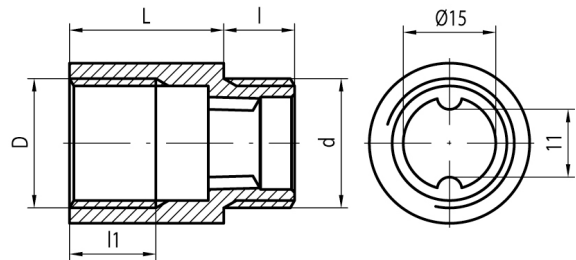


## Extension fittings TWIST

Shot blasted extension fitting, 15M



Code	Version	Dimensions					EAN13
		D	d	L	l	l1	
0200160	15M-L10	G1/2	G1/2	10	10	8,5	5907451947067
0200120	15M-L15	G1/2	G1/2	15	11,5	10,5	5907451900208
0200110	15M-L20	G1/2	G1/2	20	11,5	14	5907451900192
0200100	15M-L25	G1/2	G1/2	25	11,5	14	5907451900185
0200090	15M-L30	G1/2	G1/2	30	11,5	14	5907451926109
0200080	15M-L35	G1/2	G1/2	35	11,5	14	5907451926093
0200070	15M-L40	G1/2	G1/2	40	11,5	14	5907451926086
0200060	15M-L50	G1/2	G1/2	50	11,5	14	5907451926079
0200050	15M-L60	G1/2	G1/2	60	11,5	14	5907451926062

### Product usage:

In the piping systems of cold and hot water and central heating for connecting pipes with each other or with any other part of the installation

### Type:

Fittings

### Technical data/Operating parameters:

Max pressure: 1,0 MPa,  
Max temperature: 100°C

### Guarantee:

25-year

### Used materials:

brass

### Finish:

brass